

# Umpqua National Forest Volunteer Trail Report

---

**Name:** Tobiah Mogavero, Tom Trotter

**Organization:** Umpqua Trailblazers

**Date:** 7/13-7/15/2024

**Location/Trail#:** Illahee Flats Trail #1532

**District:** Diamond Lake

**Tasks performed:** Brushing, tread work, sawyer work, drain cleaning

**Hours:** 15 hours /volunteer\* 2 volunteer = 30 hours

**Trail condition:** Trail is passable to pedestrians, equestrian and mountain bikes.

**Vegetation:** Trail prism border by numerous types of grasses, shrubs, hardwoods, forbes, and poison oak.

**Cut/fill bank condition:** The cut/fill is 'generally' in good condition. There are two areas that need of bank reinforcement.

**Log bucking:** 4 trees up to 40" DBH.

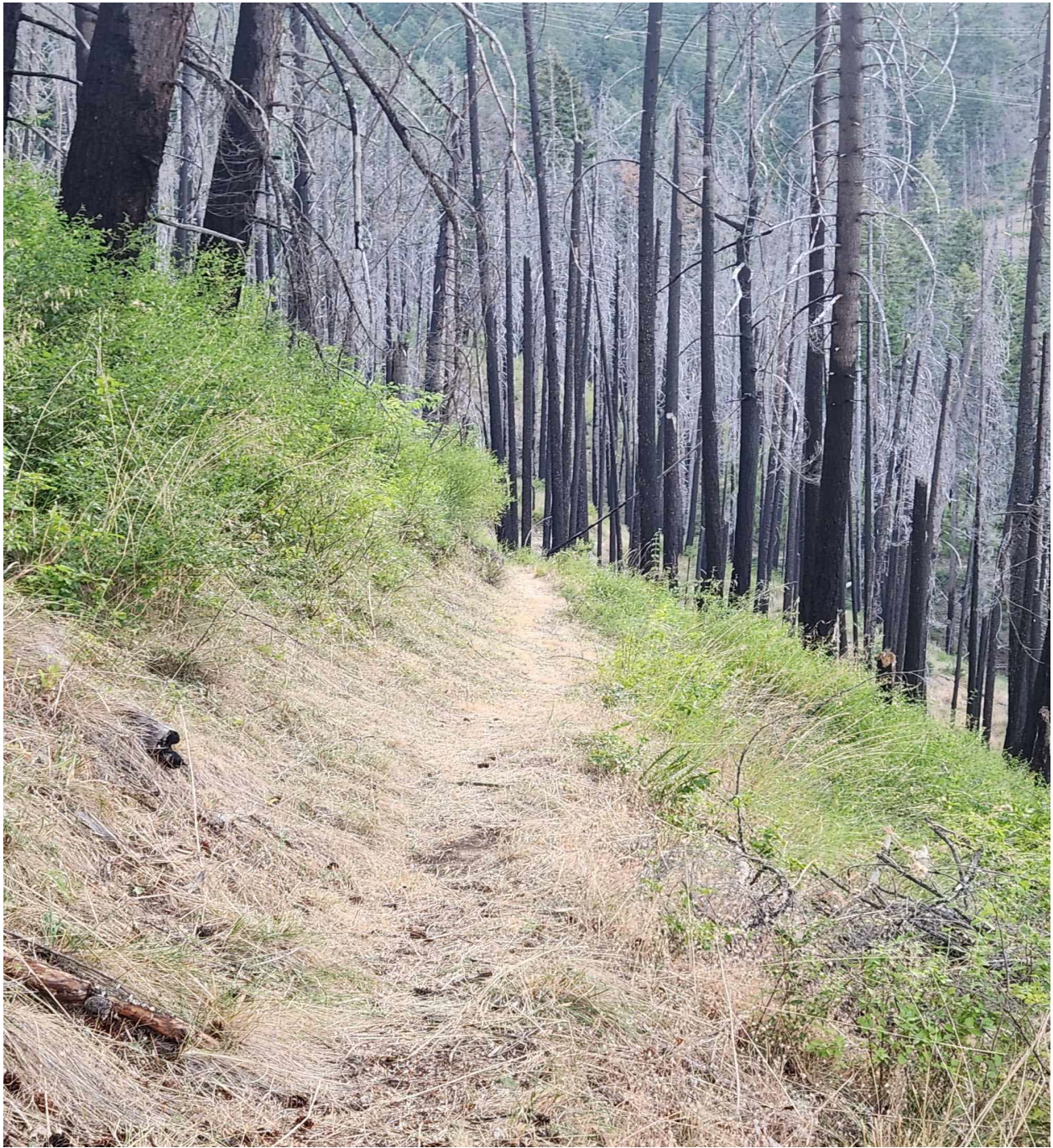
**Narrative:** On July 13th, 2024, the Umpqua Trailblazers (Group), radioed the Roseburg/Pig Iron dispatch and then stepped out on a clear trail up to about .5 miles where the vegetation had not been brushed, and was severely overgrown. The Group also cleaned four drains and removed a hazardous tree limb overhanging the trail at mile marker .5 miles. The trail prism was opened to 8' in width to accommodate mtn. bike/equestrian traffic. There are a few seldom locations that the trail prism is narrower than 8'. These areas will force mtn. bikers to slow down, they will have no effect on pedestrian or equestrian travel.

The first log, measuring 24" DBH was bucked out of the first creek drainage. Then 30' of new tread was cut because the existing tread was in poor condition. Not far after the first creek crossing, the Group bucked three more logs, and moved them out of the trail prism. The remainder of the trail was brushed down to the junction of the Jesse Wright Segment of the North Umpqua Trail. The trail should remain passable for the rest of the summer/fall season. There is very little standing poison oak left in trail prism.

**Needs:** Debris removal and an additional 120' of newly tread will be needed to maintain the trail in operable condition. The Umpqua Trailblazers anticipates completion of the tread work within two weeks.



**Figure 1:** Completed brush work at .25-mile marker.



**Figure 2:** Average width of trail prism.



**Figure 3:** Illahee Flats Trail. Photo taken just after brush work completed on 7/13/2024.



**Figure 4:** Slide area that could use a new retaining or crib wall. The tread is stable at this time, but it is imperative to fix this issue prior to the wet season.



**Figure 5:** Newly cut tread (30') leading up to the first drainage crossing.



**Figure 6:** One of four logs bucked on 7/13/2024. This area is located directly below the powerline ROW. It is anticipated that this area will need consistent maintenance for several years to come.



**Figure 7:** A very problematic log that we need additional bucking. As of 7/15/2024 this section accommodates pedestrian/bike/equestrian passage.



**Figure 8:** Another view of the hazard tree that can be found in the powerline ROW.

This report demonstrates 07/13/-07/15/2024 that The Umpqua Trailblazers Volunteered 30 hours to complete the tasks listed above.

Signature: \_\_\_\_\_

Tobiah Mogavero  
Crew Leader  
Umpqua Trail Blazers

Signature: \_\_\_\_\_

Lauren Hack  
Trails and Wilderness Technician & Volunteer Coordinator  
North Zone Ranger Districts  
Umpqua National Forest